

BUSINESS ADVICE

WORKING FROM HOME

Working from home presents a unique challenge, both for the employer and employee alike. Advice on how to respond to those challenges is laid out in the National Cyber Security Centre “working from home guide”.



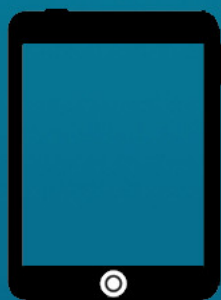
Use a secure VPN to connect.



Secure home wi-fi with a strong password.



Don't let others use your devices.



Use 2-factor authentication.



Create guides for use and how to report issues.



Encrypt user data when not in use.

If you think you may have fallen for a scam, contact your bank immediately, and report it to Action Fraud on [0300 123 2040](tel:03001232040) or via actionfraud.police.uk.

For local assistance, you can also contact the Guernsey Police on [725111](tel:725111), or via fraud@guernsey.pnn.police.uk, and Trading Standards via scams@gov.gg or tradingstandards@gov.gg.